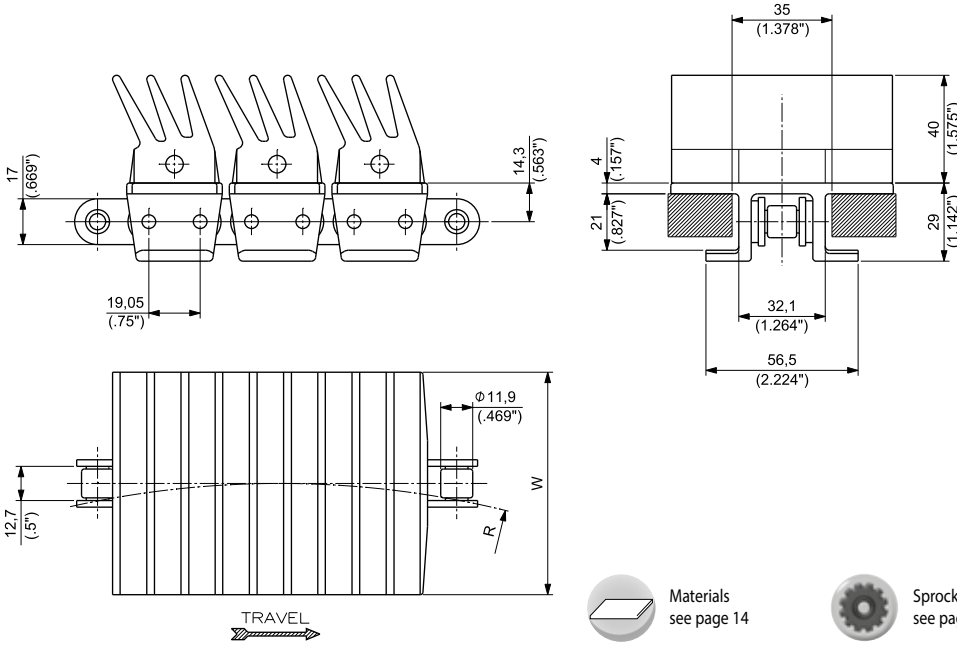
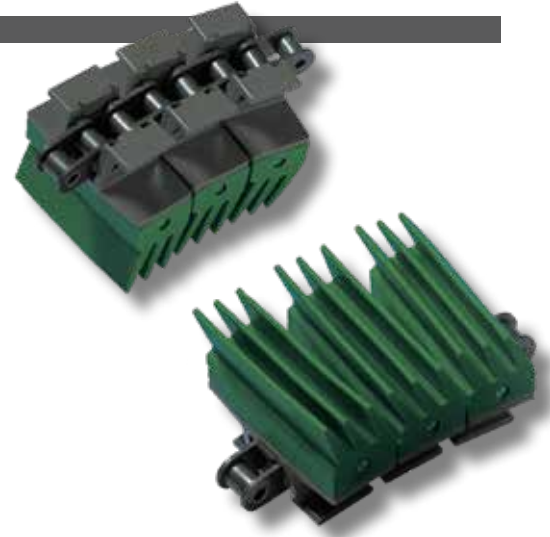


TAB PLASTIC FLIGHTS
3/4" PITCH ROLLER CHAIN
LONG FINGERS RUBBER PAD
THICKNESS 4 mm (0.157")
HINGE 32,1 mm (1.264")



Materials see page 14



Sprockets see page 154



Corner tracks see page 344



Applications see page 22

MATERIALS			ITEM DESCRIPTION	PART NUMBER	CONNECTING LINK PART NUMBER	WIDTH	SIDEFLEXING RADIUS	WORKING LOAD	WEIGHT			
Flight	Base chain	Rubber				mm	inch	N	lbs	kg/m	lbs/ft	
			EW 1873T UP K 3 1/4	EW1873KD/000	18/0873	82,6	3.25	355,6	14.00	4500	1012	4,16 2.80
			EW 1873T UP K 4 1/2	EW1873UPKG/000		114,3	4.50	355,6	14.00	4500	1012	4,94 3.32
			EW 1873T UP SS K 3 1/4	EW1873SKD/000	18/SS873AB	82,6	3.25	355,6	14.00	3500	787	4,11 2.76
			EW 1873T UP SS K 4 1/2	EW1873UPSKG/000		114,3	4.50	355,6	14.00	3500	787	4,89 3.29
			EW 1873T UP BS K 3 1/4	EW1873UPBKD/000	18/873BS	82,6	3.25	355,6	14.00	3500	787	4,17 2.80
			EW 1873T UP BS K 4 1/2	EW1873UPBKG/000		114,3	4.50	355,6	14.00	3500	787	4,95 3.33
			EW 1873T UP HS SS K 3 1/4	EW1873HSSKD/003	18/SS873AB	82,6	3.25	355,6	14.00	3500	787	4,37 2.94
			EW 1873T D2K K 3 1/4	EW1873D2KKD/000	18/0873	82,6	3.25	355,6	14.00	4500	1012	4,16 2.80
			EW 1873T D2K K 4 1/2	EW1873D2KKG/000		114,3	4.50	355,6	14.00	4500	1012	4,94 3.32
			EW 1873T D2K SS K 3 1/4	EW1873D2KSKD/000	18/SS873AB	82,6	3.25	355,6	14.00	3500	787	4,11 2.76
			EW 1873T D2K SS K 4 1/2	EW1873D2KSKG/000		114,3	4.50	355,6	14.00	3500	787	4,89 3.29
			EW 1873T D2K BS K 3 1/4	EW1873D2KBKD/000	18/873BS	82,6	3.25	355,6	14.00	3500	787	4,17 2.80
			EW 1873T D2K BS K 4 1/2	EW1873D2KBKG/000		114,3	4.50	355,6	14.00	3500	787	4,95 3.33
			EW 1873T D2K HS SS K 3 1/4	EW1873HSSKD/002	18/SS873AB	82,6	3.25	355,6	14.00	3500	787	4,37 2.94



Standard packaging:
Rolls of 3,048 m (10 feet)